

PERFECT CADENCE (V-I)



Consists of the **DOMINANT (V)** chord followed by the **TONIC (I)** chord

RULES IN 4-PART HARMONY aka SATB

To start, write the **ROOT** note in the **BASS** part

V = **G** B D G
I = **C** E G C
(Eg: In C major)



Write the other three voices with the **smoothest voice leading**

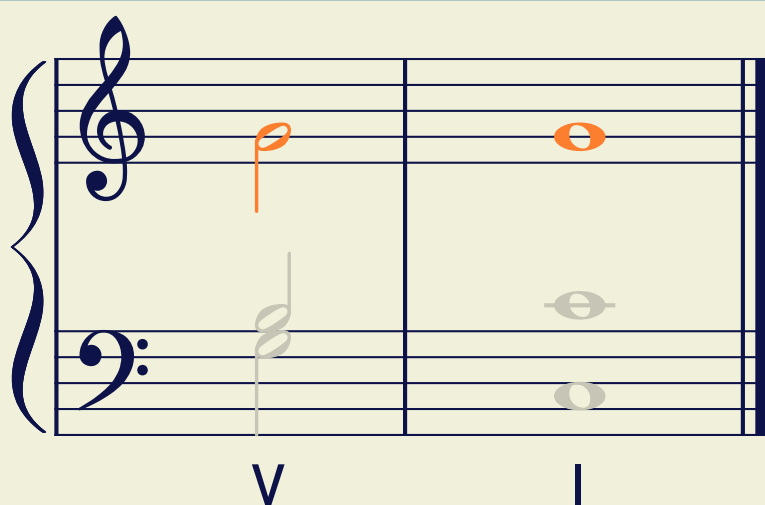
The **LEADING NOTE** **must** be followed by the **TONIC**

V = G **B** D G
I = C E G **C**
(Eg: In C major)



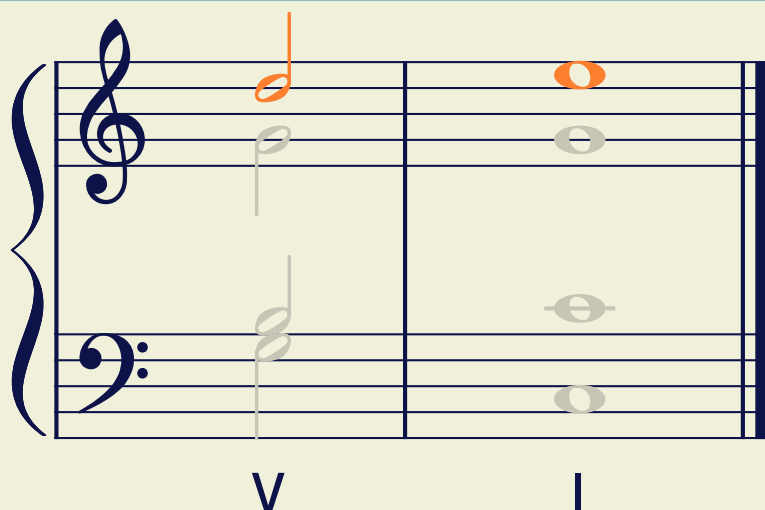
Write the **common note** (same letter name) in the same voice

V = G B D **G**
I = C E **G** C
(Eg: In C major)



Write the last voice in **step-wise motion**

V = G B **D** G
I = C **E** G C
(Eg: In C major)



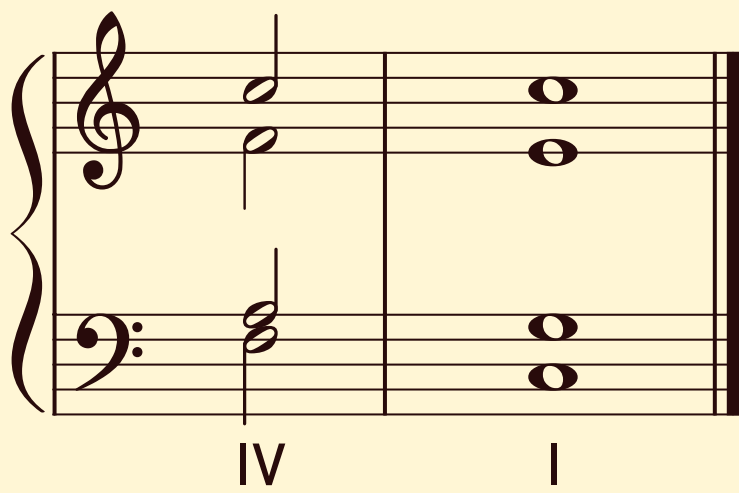
As long as you keep these rules, you can switch the **SOPRANO, ALTO and TENOR** voices

Keep an appropriate space between each voice

SUMMARY

- ★ The Bass note using the root
- ★ One common note (same letter name)
- ★ Two voices stepping up (including the LEADING NOTE-TONIC rule)

PLAGAL CADENCE (IV-I)



Consists of the
SUBDOMINANT (IV) chord
followed by the
TONIC (I) chord

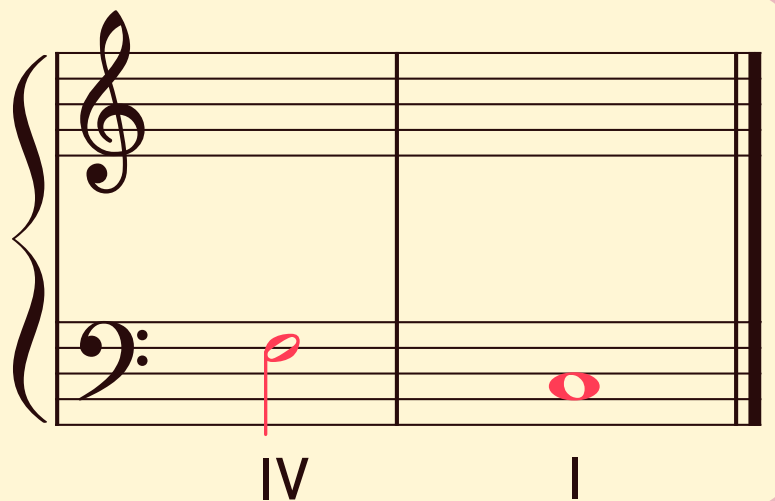
RULES IN 4-PART HARMONY aka SATB

To start, write the ROOT
note in the BASS part

IV = **F** A C F

I = **C** E G C

(Eg: In C major)



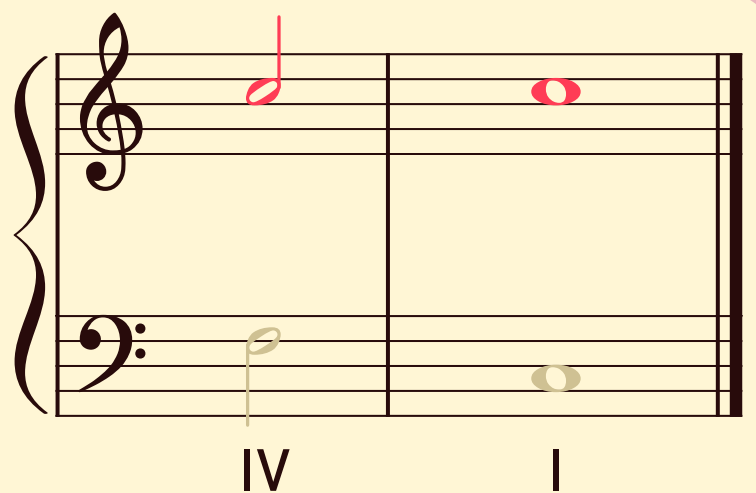
Write the other three voices with the
smoothest voice leading

Write the common note
(same letter name)
in the same voice

IV = F A **C** F

I = C E G **C**

(Eg: In C major)

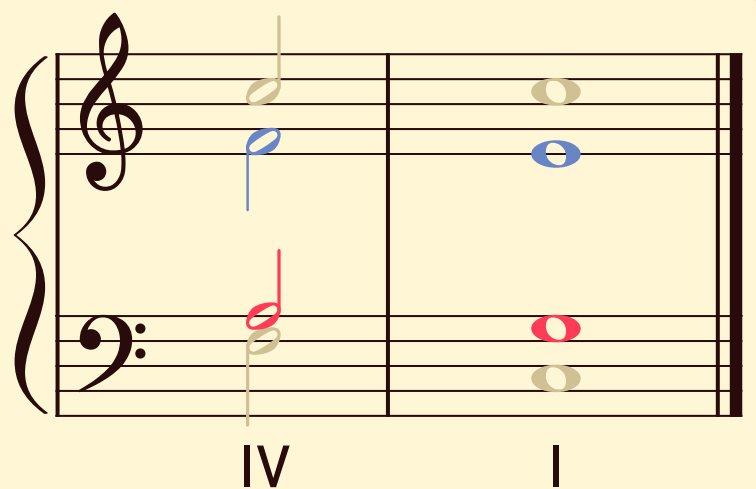


Organise the remaining
notes in step-wise motion

IV = F **A** C F + F A C **F**

I = C E **G** C + C **E** G C

(Eg: In C major)



As long as you keep these rules, you can
switch the SOPRANO, ALTO and TENOR voices

Keep an appropriate space between each voice

SUMMARY

- ★ The Bass note using the root
- ★ One common note (same letter name)
- ★ Two voices stepping down